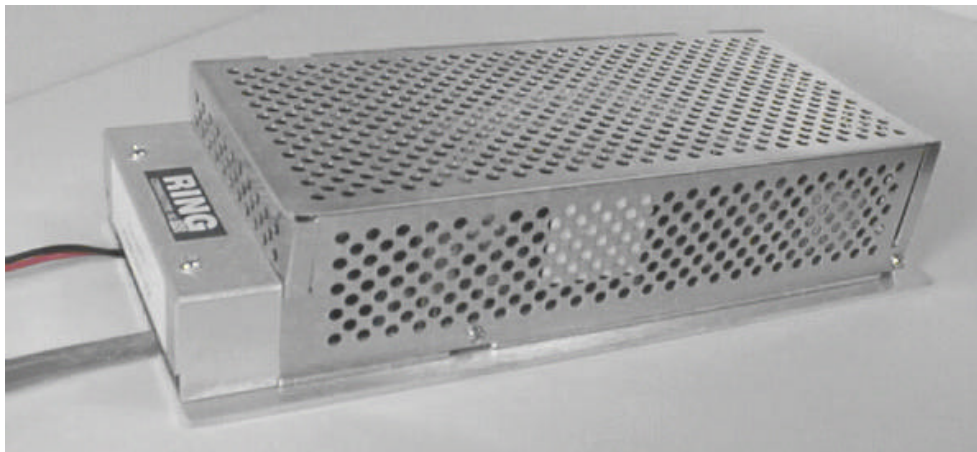


POWER SUPPLIES

From sound mechanical construction, to good thermal management, to fault tolerant electronic design, to end-user reliability, these power supplies are for use with Ring-Master Pro700, RM5000, CB901, 24volt DC with choice of a 2.5 amp, 5 amp or 12 amp supply.



SERIES FEATURES

UL1950 Listed

VDE Registered: VDE-Reg.-Nr.2614, 2619,
2620, 2638 & 2639

CSA Certified: Certification No. LR64183

Integrated EMI input filter

Hybrid Integrated Control Circuit (HIC)

Dual range AC input

AC power fail signal

100,000 to 150,000 Hrs. MTBF

Elevated temperature burn-in

Surface mount technology

Pem nut mounting

Soft start circuitry

Up to 85% efficiency

Protective circuitry

Each unit comes complete with U.L. approved three pin AC cord, cables for connection to Ring-Master central equipment and for optional hook up to a battery back up.

AC Input: User selectable dual range. Factory set for 115 VAC. Voltage selection may be made via a connector on the printed circuit board. Terminals are marked 115V and 230V.

Fusing: Input line is protected by an internal board mounted fuse. Recommended fuse ratings per UL and CSA table below.

- 2A/250V medium blow - PSDC24-2.5
- 4A/250V medium blow - PSDC24-5
- 6.3A/250V medium blow - PSDC24-12

Turn-On Delay: Less than 100 msec after application of load.

Input Surge Current: Less than 30A under a cold start at 115 or 230 VAC.

DC Voltage Adjust: 10% of nominal output voltage. Clockwise rotation of externally accessible pot (VR1) on the printed circuit board increases the output voltage.

Line Regulation: 0.5% within specified input voltage range.

Load Regulation: 0.5% from no-load to full load.

Noise and Ripple: Maximum 75mV p-p maximum or 0.5% of nominal output voltage, whichever is greater.

Remote/Local Sensing: Compensates for output line loss. Open sense lead and reverse sense lead protection are provided.

Overload Protection: Continuous protection with instantaneous fold back limiting type circuitry. Foldback occurs at 110-140% of full load.

Overvoltage Protection: Inverter shut down and crowbar type. OVP reset by cycling input power.

Reverse Voltage Protection: Output is inherently protected against reverse output voltages up to the full current rating of the power supply.

No-Load Protection: Operation without load current on output will not reduce reliability or otherwise impair performance when loads are reapplied.

Burn-In: All units undergo an elevated temperature burn-in during stress testing. Includes cyclical loading (NL-FL) and input power cycling (on-off).

Cooling: By convection.

Operating Temperature: 0-5 C continuous duty at full rated load. Derate linearly to 50% rated load at 71 C. Maximum ambient operating temperature measured one inch above main transformer. Ratings may be improved with forced air cooling.

Operating Humidity: 0-95% relative humidity without condensation.

EMI: FCC20780 Part 15, Subpart J Class B for 2.5 amp and 5 amp and Class A for 12 amp.

MTBF: As follows: PSDC24-2.5, 150,000 hrs; PSDC24-5, 140,000 hrs; PSDC24-12, 100,000 hrs. Calculations per MIL-HDBK-217D at 100% load, 120 VAC line and 25 degree C ambient temperature.

Safety: Compliance to international safety regulations for power supply specifications. UL1950 Listed. CSA certified, certification no. LR64183.

Construction: Enclosed chassis with removable hinged cover. Material is aluminum with passivation finish.

	<u>PSDC24-2.5</u>	<u>PSDC24-5</u>	<u>PSDC24-12</u>
Length:	12 3/8"	12 3/8"	12 3/8"
Width:	5 1/4"	5 1/4"	5 1/4"
Depth:	2 1/8"	2 1/2"	2 3/4"
Weight:	2.6 lbs.	3.8 lbs.	5.9 lbs.